

POLE BAND POSITION			
POLE LENGTH	A	B	C
30 ft	6"	8'-0	12'-0
36 ft	1'-0	13'-0	17'-0

POLE BAND SIZE NUMBER	O.D.(ACROSS POINTS) OF POLE (ROUND OR MULTISIDED)	
	MIN.	MAX.
12	11	1'-1
13	1'-1	1'-2
14	1'-2	1'-3
15	1'-3	1'-4

GENERAL NOTES:

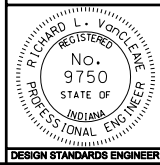
- ① Taper pole 0.14 in. per foot of length.
- ② Band position can be variable depending of minimum clearance requirement of tether the cable over the road, and the elevation of the top of the foundation relative to the top of the traveled roadway.
- ③ Design load of 8000 lb applied perpendicular to pole axis 1'-6 from top of pole.

INDIANA DEPARTMENT OF TRANSPORTATION

30 ft. AND 36 ft. SIGNAL STEEL STRAIN POLES

SEPTEMBER 2005

STANDARD DRAWING NO. E 805-SGSP-01

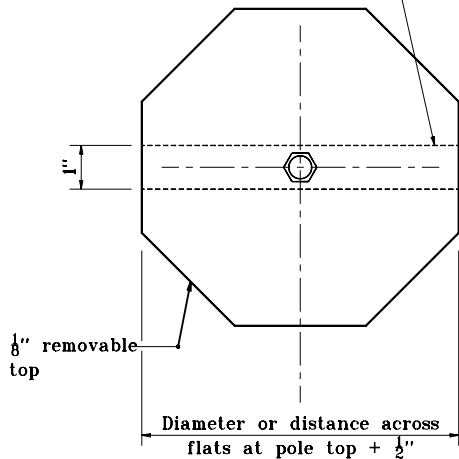


/s/ Richard L. VanCleave 9-01-05
DESIGN STANDARDS ENGINEER DATE

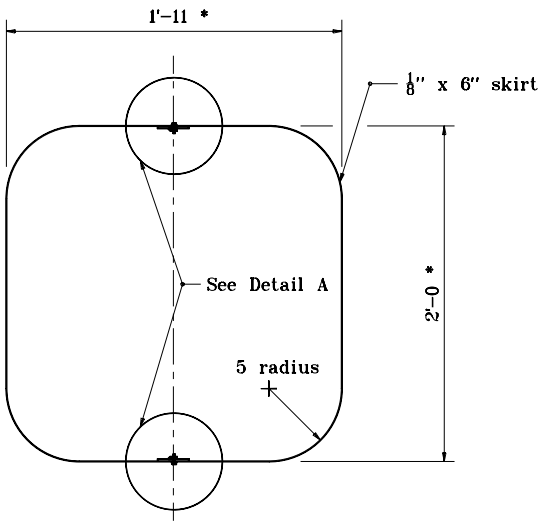
/s/ Richard K. Smutzer 9-01-05
CHIEF HIGHWAY ENGINEER DATE

DESIGN STANDARDS ENGINEER

Bar to be welded to inside of pole
 $\frac{1}{4}$ in x 1 in. with $\frac{3}{8}$ in.
 $\frac{3}{8}$ " threaded hole

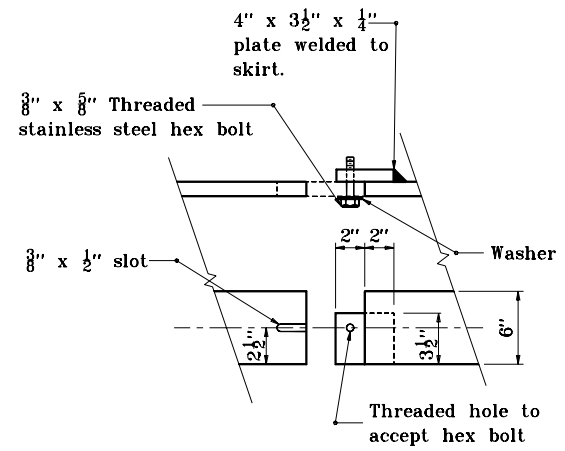


TOP COVER

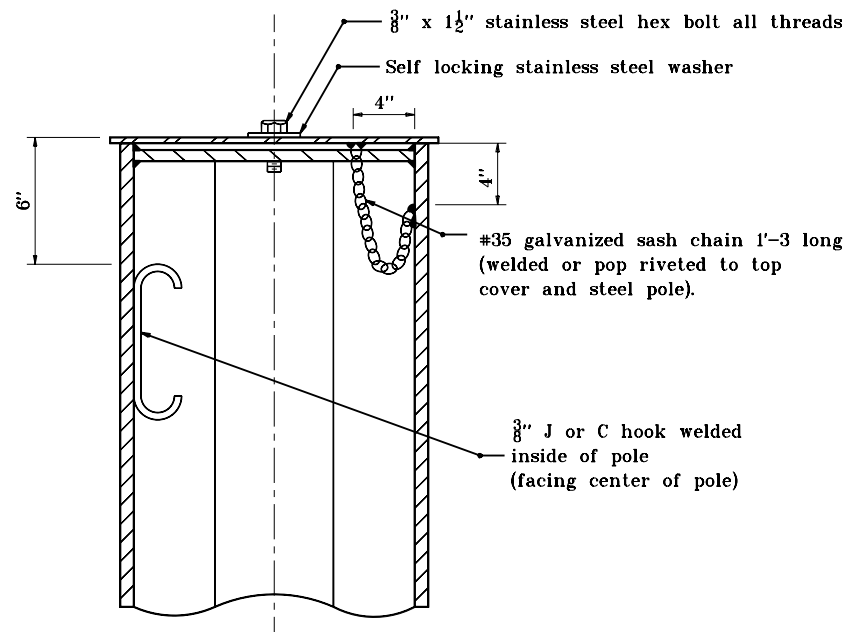


* Inside dimension

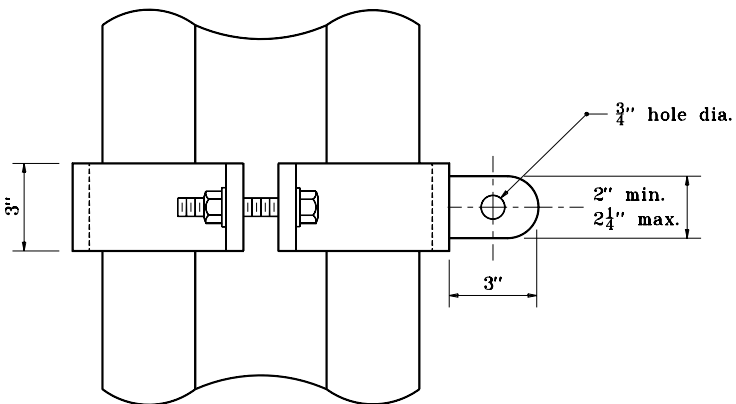
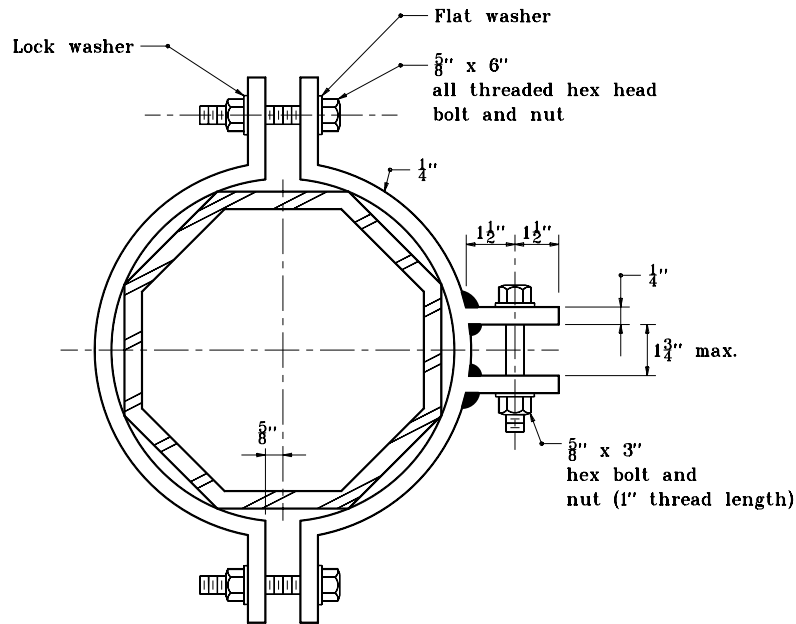
METAL SKIRT (BASE PLATE)



DETAIL A

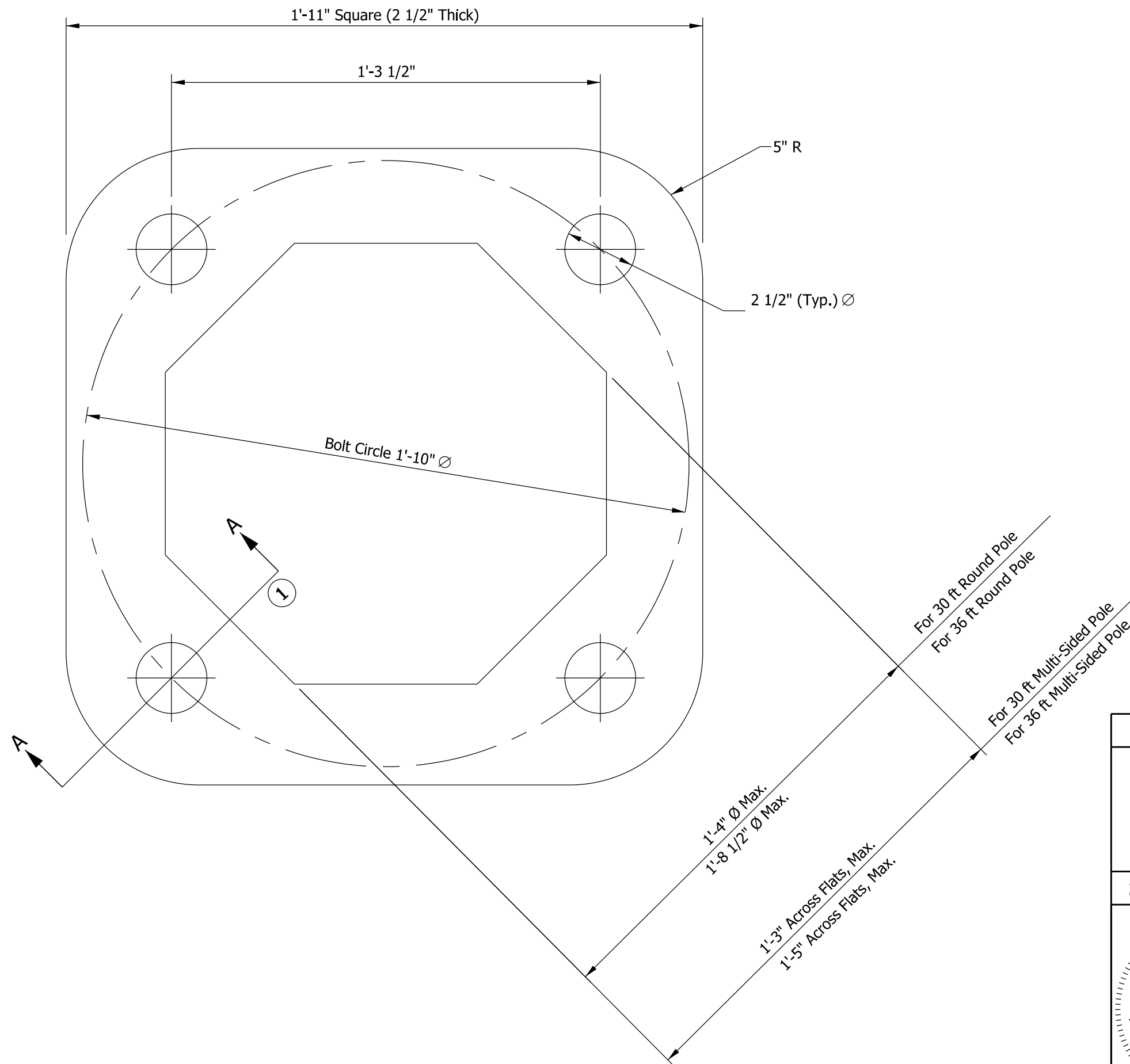


INDIANA DEPARTMENT OF TRANSPORTATION	
TOP COVER AND METAL SKIRT OF SIGNAL STEEL STRAIN POLE	
MARCH 1995	
STANDARD DRAWING NO. E 805-SGSP-02	
DETAILS PLACED IN THIS FORMAT 11-15-99	
	/s/ Anthony L. Uremovich 11-15-99 DESIGN STANDARDS ENGINEER DATE
	/s/ Firooz Zandi 11-15-99 CHIEF HIGHWAY ENGINEER DATE
	ORIGINALLY APPROVED 3-01-95



**REQUIRES TWO POLE BANDS AT EACH POSITION
ON POLE (SIX BANDS PER POLE)**

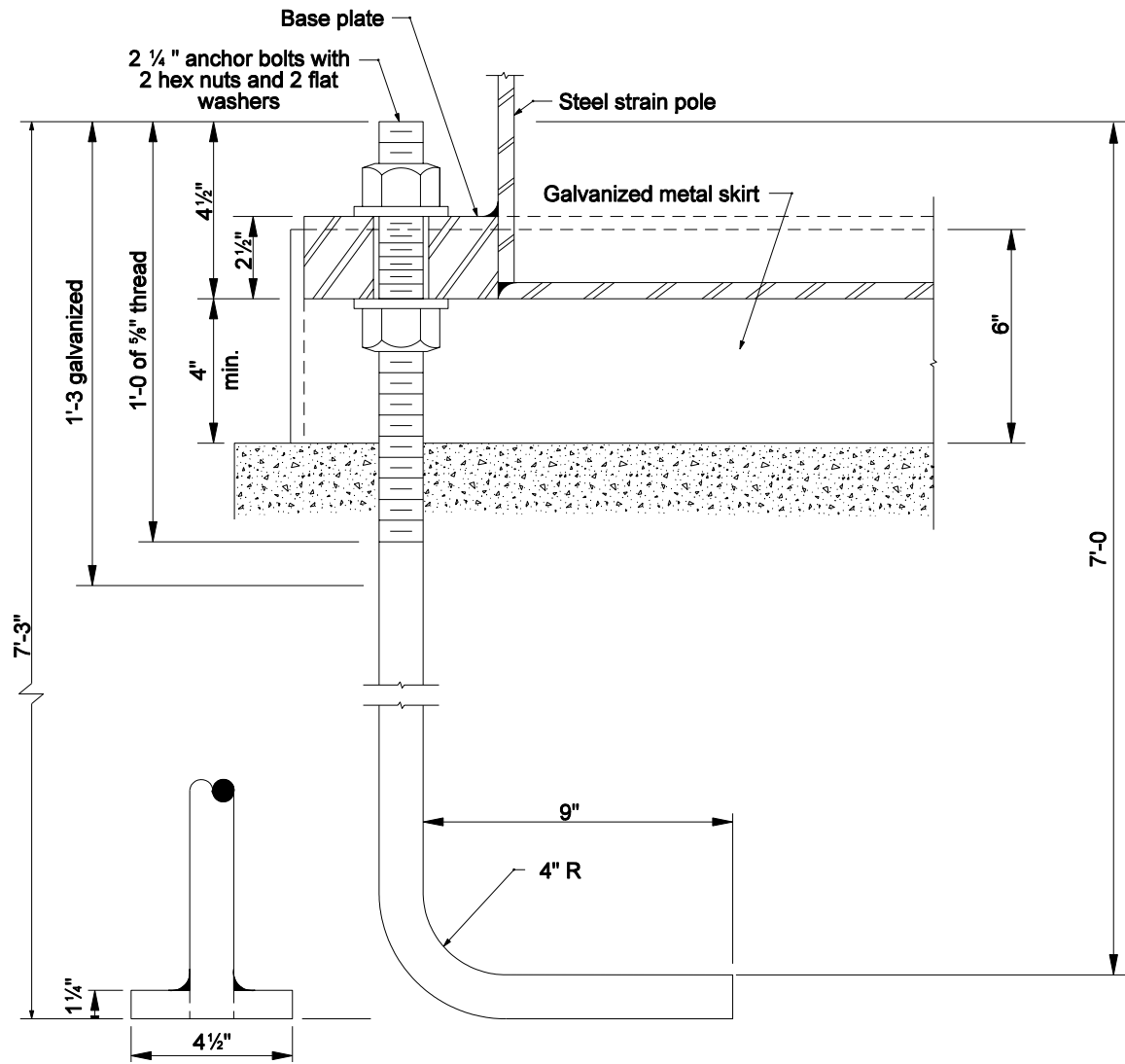
INDIANA DEPARTMENT OF TRANSPORTATION	
POLE BAND FOR SIGNAL STEEL STRAIN POLE	
SEPTEMBER 1998	
STANDARD DRAWING NO. E 805-SGSP-03	
	DETAILS PLACED IN THIS FORMAT 11-15-99
	/s/ Anthony L. Uremovich 11-15-99 DESIGN STANDARDS ENGINEER DATE
	/s/ Firooz Zandi 11-15-99 CHIEF HIGHWAY ENGINEER DATE
DESIGN STANDARDS ENGINEER	ORIGINALLY APPROVED 9-01-98



NOTES:

- ① See Standard Drawing E 805-SGSP-05 for Section A-A.

INDIANA DEPARTMENT OF TRANSPORTATION									
SIGNAL STEEL STRAIN POLE BASE PLATE									
SEPTEMBER 2013									
STANDARD DRAWING NO.	E 805-SGSP-04								
	<table style="width: 100%; border-collapse: collapse;"> <tr> <td style="width: 60%; border-bottom: 1px solid black;">/s/ <i>Alfredo B. Hanza</i></td> <td style="width: 40%; border-bottom: 1px solid black;">02/05/13</td> </tr> <tr> <td>DESIGN STANDARDS ENGINEER</td> <td>DATE</td> </tr> <tr> <td style="border-bottom: 1px solid black;">/s/ <i>Mark A. Miller</i></td> <td style="border-bottom: 1px solid black;">03/27/13</td> </tr> <tr> <td>CHIEF ENGINEER</td> <td>DATE</td> </tr> </table>	/s/ <i>Alfredo B. Hanza</i>	02/05/13	DESIGN STANDARDS ENGINEER	DATE	/s/ <i>Mark A. Miller</i>	03/27/13	CHIEF ENGINEER	DATE
/s/ <i>Alfredo B. Hanza</i>	02/05/13								
DESIGN STANDARDS ENGINEER	DATE								
/s/ <i>Mark A. Miller</i>	03/27/13								
CHIEF ENGINEER	DATE								



ALTERNATIVE
 1/4" x 4 1/2" square plate tapped
 & welded to anchor bolt

SECTION A-A

INDIANA DEPARTMENT OF TRANSPORTATION	
ANCHOR BOLT DETAIL FOR SIGNAL STEEL STRAIN POLES	
MARCH 2004	
STANDARD DRAWING NO. E 805-SGSP-05	
	/s/ Richard L. VanCleave 3/01/04 <small>DESIGN STANDARDS ENGINEER DATE</small>
	/s/ Richard K. Smutzer 3/01/04 <small>CHIEF HIGHWAY ENGINEER DATE</small>
<small>DESIGN STANDARDS ENGINEER</small>	